



## Thaw and Culture Details

Cell Line Name	<b>JHU036i</b>
WiCell Lot Number	<b>DB40981</b>
Provider	Johns Hopkins University – Laboratory of Dr. Lewis Becker
Banked By	Johns Hopkins University – Laboratory of Dr. Lewis Becker
Thaw and Culture Recommendations	WiCell recommends thawing 1 vial into 1 well of a 6 well plate using TeSR™-E8™ and Recombinant Human Vitronectin. WiCell recommends thawing using ROCK Inhibitor for best results.
Protocol	WiCell Feeder Independent Pluripotent Stem Cell Protocol
Culture Platform Prior to Freeze	Feeder Independent
	Medium: E8
	Matrix: Vitronectin
Passage Number	p6 These cells were cultured for 6 passages post reprogramming prior to freeze. Add +1 to the passage number to best represent the overall passage number of the cells at thaw.
Date Vialied	24-June-2016
Vial Label	P036 hips P6 1.2X10 <sup>6</sup> 6/24/16
Biosafety and Use Information	Appropriate biosafety precautions should be followed when working with these cells. The end user is responsible for ensuring that the cells are handled and stored in an appropriate manner. WiCell is not responsible for damages or injuries that may result from the use of these cells. Cells distributed by WiCell are intended for research purposes only and are not intended for use in humans.

## Testing Performed by WiCell

Test Description	Test Provider	Test Method	Test Specification	Result
Karyotype by G-banding	WiCell	SOP-49	Expected karyotype	See Report
Post-Thaw Viable Cell Recovery	WiCell	SOP-99	Recoverable attachment after passage	Pass
Identity by STR	WiCell	PowerPlex 16 HS System by Promega	Defines STR profile of deposited cell line	Pass
Sterility	Steris	ST/07	Negative	Pass
Mycoplasma	WiCell	SOP-79	Negative	Pass

## Testing Reported by Provider

The Provider stated that some or all of the additional analyses listed below may have been performed for this cell line. For more information, publication and dbGaP links, where available, are provided on the cell line specific web page on the WiCell website.

- Embryoid bodies
- Infinium® Expanded Multi-Ethnic Genotyping Array (MEGA<sup>EX</sup>)



Approval Date	Quality Assurance Approval
17-December-2020	<p style="text-align: right;">8/17/2022</p> <p>X_HEB HEB Quality Assurance Signed by Bruner, Haley</p>

**Date Reported:** Wednesday, November 18, 2020

**Cell Line Sex:** Male

**Cell Line:** JHU036i-DB40981

**Reason for Testing:** LOT\_RELEASE

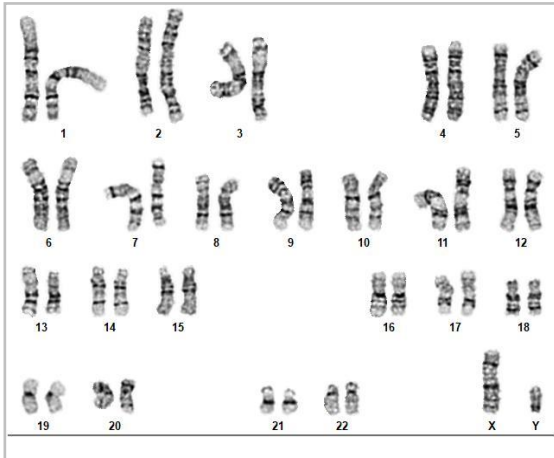
**Submitted Passage #:** 7

**Date of Sample:** 11/10/2020

**Investigator:** WiCell Stem Cell Bank, WiCell

**Specimen:** Human iPSC

**Results:** 46,XY



**Cell:** 10

**Slide:** G02

**Slide Type:** Karyotype

**Total Counted:** 20

**Total Analyzed:** 8

**Total Karyogrammed:** 4

**Band Resolution:** 350 - 475

**Interpretation:**

**This is a normal karyotype; no clonal abnormalities were detected at the stated band level of resolution.**

**Completed by:** [REDACTED]

**Reviewed and Interpreted by:** [REDACTED], Ph.D.

**Date:** \_\_\_\_\_ **Sent By:** \_\_\_\_\_ **Sent To:** \_\_\_\_\_ **QC Review By:** \_\_\_\_\_

*Limitations: This assay allows for microscopic visualization of numerical and structural chromosome abnormalities. The size of structural abnormality that can be detected is >3-10Mb, dependent upon the G-band resolution obtained from this specimen. For the purposes of this report, band level is defined as the number of G-bands per haploid genome. It is documented here as "band level", i.e., the range of bands determined from the four karyograms in this assay. Detection of heterogeneity of clonal cell populations in this specimen (i.e., mosaicism) is limited by the number of metaphase cells examined, documented here as "# of cells counted".*

*This assay was conducted solely for listed investigator/institution. The results of this assay are for research use only. Unless otherwise mutually agreed in writing, the services provided to you hereunder by WiCell Research Institute, Inc. ("WiCell") are governed solely by WiCell's Terms and Conditions of Service, found at [www.wicell.org/privacyandterms](http://www.wicell.org/privacyandterms). Any terms you may attach to a purchase order or other document that are inconsistent, add to, or conflict with WiCell's Terms and Conditions of Service are null and void and of no legal force or effect.*



# Short Tandem Repeat

Requestor: WiCell Stem Cell Bank, WiCell

Samples Received: 10Nov20, 12Nov20

STR Amplification Date: 16Nov20

Sample Name	JHU036i-DB40981 p.7	JHU103i-DB36236 p.5	JHU085i-DB36225 p.7	PENN022i-89-1-WB67590 p.20
Label on tube	83722	83807	83808	83809
FGA	Identifying information has been redacted to protect donor confidentiality. If more information is required, please contact <a href="mailto:info@wicell.org">info@wicell.org</a>			
TPOX				
D8S1179				
vWA				
Amelogenin				
Penta_D				
CSF1PO				
D16S539				
D7S820				
D13S317				
D5S818				
Penta_E				
D18S51				
D21S11				
TH01				
D3S1358				
Allelic Polymorphisms	24	27	26	27
Matches*				
Comments				

*\*Note: The STR profile of the following sample is an exact match for the given sample/samples.*



# Short Tandem Repeat

Requestor: WiCell Stem Cell Bank, WiCell  
Samples Received: 10Nov20, 12Nov20  
STR Amplification Date: 16Nov20

**Results:** The genotypic profiles comprise a range of 24-27 allelic polymorphisms across the 15 STR loci analyzed.

**Interpretation:** The concentration of DNA required to achieve an acceptable STR genotype (signal/ noise) was equivalent to that required for the standard procedure (~1 ng/amplification reaction) from human genomic DNA. These results suggests that the cells submitted correspond to the cell lines as named and were not contaminated with any other human cells or a significant amount of mouse feeder layer cells.

**Sensitivity:** Sensitivity limits for detection of STR polymorphisms unique to either this or other human cell lines is ~2-5%.

11/20/2020

11/20/2020

11/20/2020

X [Redacted]

Tech #1  
Characterization  
Signed by: [Redacted]

X [Redacted]

Tech #2  
Characterization  
Signed by: [Redacted]

X [Redacted]

QA Review  
Quality Assurance  
Signed by: [Redacted]

*Unless otherwise mutually agreed in writing, the services provided to you hereunder by WiCell Research Institute, Inc. ("WiCell") are governed solely by WiCell's Terms and Conditions of Service, found at [www.wicell.org/privacyandterms](http://www.wicell.org/privacyandterms). Any terms you may attach to a purchase order or other document that are inconsistent, add to, or conflict with WiCell's Terms and Conditions of Service are null and void and of no legal force or effect.*

*Raw data is available upon request.*

# Native Product Sterility Report



WiCell  
504 S Rosa Road, Rm 101  
Madison, WI 53719

SAMPLE #: 20110772  
DATE RECEIVED: 12-Nov-20  
TEST INITIATED: 17-Nov-20  
TEST COMPLETED: 01-Dec-20

SAMPLE NAME / DESCRIPTION: PENN022i-89-1-WB67590  
WA09-RB67589  
JHU036i-DB40981  
JHU105i-DB36241  
JHU148i-DB36280  
JHU173i-DB36380  
JHU214i-DB36851  
JHU234i-DB37041  
STAN207i-459C2-WB67594  
JHU085i-DB36225

UNIQUE IDENTIFIER: N/A

TEST RESULTS:

# Tested	# Positives (Growth)	- Control
10	0	2 Negatives

TEST SUMMARY:

# Samples	Media Type	Volume (mL)	Incubation Temperature (° C)	Incubation Duration (Days)
10	TSB	40	20-25	14
10	FTG	40	30-35	14

REFERENCE: Processed according to LAB-003: Sterility Test Procedure

PD #: 000053

TEST METHODOLOGY: USP - Direct Transfer

COMMENTS: NA

REVIEWED BY  Digitally signed by Sarah Scribner  
Date: 2020.12.03 07:19:34 -06'00'

DATE \_\_\_\_\_

Specific test results may not be indicative of the characteristics of any other samples from the same lot or similar lots. This test report shall not be reproduced, except in full, without prior written approval. Liability is limited to the costs of the tests. Results applied to samples as received.



# Mycoplasma Assay Report

PCR-based assay performed by WiCell

WiCell

04Nov20

FORM SOP-83.01

Version 01

Sample Name	Result	Comments/Suggestions
INC149 02Nov20AP (83598)	Negative	Band was not seen at 270bp, indicating the absence of mycoplasma.
INC123 02Nov29KR 1 of 2 (83599)	Negative	Band was not seen at 270bp, indicating the absence of mycoplasma.
INC123 02Nov20KR 2 of 2 (83600)	Negative	Band was not seen at 270bp, indicating the absence of mycoplasma.
INC169 02Nov20MMM 1 of 2 (83601)	Negative	Band was not seen at 270bp, indicating the absence of mycoplasma.
INC169 02Nov20MMM 2 of 2 (83602)	Negative	Band was not seen at 270bp, indicating the absence of mycoplasma.
JHU105i-DB36241 (83622)	Negative	Band was not seen at 270bp, indicating the absence of mycoplasma.
JHU004i-2-DB40945 (83623)	Negative	Band was not seen at 270bp, indicating the absence of mycoplasma.
JHU036i-DB40981 (83624)	Negative	Band was not seen at 270bp, indicating the absence of mycoplasma.
JHU102i-DB41279 (83625)	Negative	Band was not seen at 270bp, indicating the absence of mycoplasma.
JHU148i-DB36280 (83626)	Negative	Band was not seen at 270bp, indicating the absence of mycoplasma.
JHU173i-DB36380 (83627)	Negative	Band was not seen at 270bp, indicating the absence of mycoplasma.
JHU214i-DB36851 (83628)	Negative	Band was not seen at 270bp, indicating the absence of mycoplasma.
JHU234i-DB37041 (83629)	Negative	Band was not seen at 270bp, indicating the absence of mycoplasma.
JHU250i-DB36904 (83630)	Negative	Band was not seen at 270bp, indicating the absence of mycoplasma.
Positive (+) Control	Positive	
Negative (-) Control	Negative	

Reported by: [REDACTED], Senior Cell Culture Specialist

Reviewed by: [REDACTED], Assistant Cell Culture Specialist

*Unless otherwise mutually agreed in writing, the services provided to you hereunder by WiCell Research Institute, Inc. ("WiCell") are governed solely by WiCell's Terms and Conditions of Service, found at [www.wicell.org/privacyandterms](http://www.wicell.org/privacyandterms). Any terms you may attach to a purchase order or other document that are inconsistent, add to, or conflict with WiCell's Terms and Conditions of Service are null and void and of no legal force or effect.*

*A gel image is available upon request.*